



CANAPAYA  
RESIDENCES

888 Rama III, Bangkok

Experience the height of riverfront living.



## CANAPAYA RESIDENCES

888 Rama III Road

An exclusive freehold riverfront condominium situated by the Chao Phraya River on Rama III Road.

The award-winning iconic landmark is designed for all the exclusive 168 residential units to enjoy the magnificent views of the river with state-of-the-art facilities and concierge services.



Reasons to make  
**CANAPAYA RESIDENCES**  
Your Perfect Home

- ✦ A luxury freehold riverfront condominium offering unimpeded views of the magnificent Chao Phraya River in an enviable location.
- ✦ Convenient location on Rama III Road, with easy access to 3 expressway entrances and exits.
- ✦ Just 5 minutes by car from Sathorn's Central Business District and located only moments away from two of the best international schools in Bangkok, King's College International School and Shrewsbury International School.
- ✦ Ultimate privacy with low density design, offering only 168 units and ample car parking spaces of 140% of the units.
- ✦ Equipped with spacious and functional common facilities, including an infinity pool located on the 50<sup>th</sup> floor with stunning panoramic river views, clubhouse, fitness facilities, dance studio, music room, spa & salon, outdoor jogging track, basketball court, golf putting greens, and multiple co-working spaces.
- ✦ Pet-friendly – various dedicated amenities for your beloved four-legged friends, including a rooftop pet leisure park and pet grooming/shower facilities.
- ✦ Top of the class concierge services to cater to residents' every day-to-day needs.
- ✦ Designed to harmonize with Chinese Fengshui and boasts the prestigious home address of 888 Rama III Road.







# True conveniences on an auspicious location

Inspired by the exquisite river view and the vibrancy of Bangkok city, CANAPAYA RESIDENCES embodies the serenity and tranquility of a riverside resort while promises the conveniences and comforts of the city.

5 minutes to Sathorn-Silom CBD

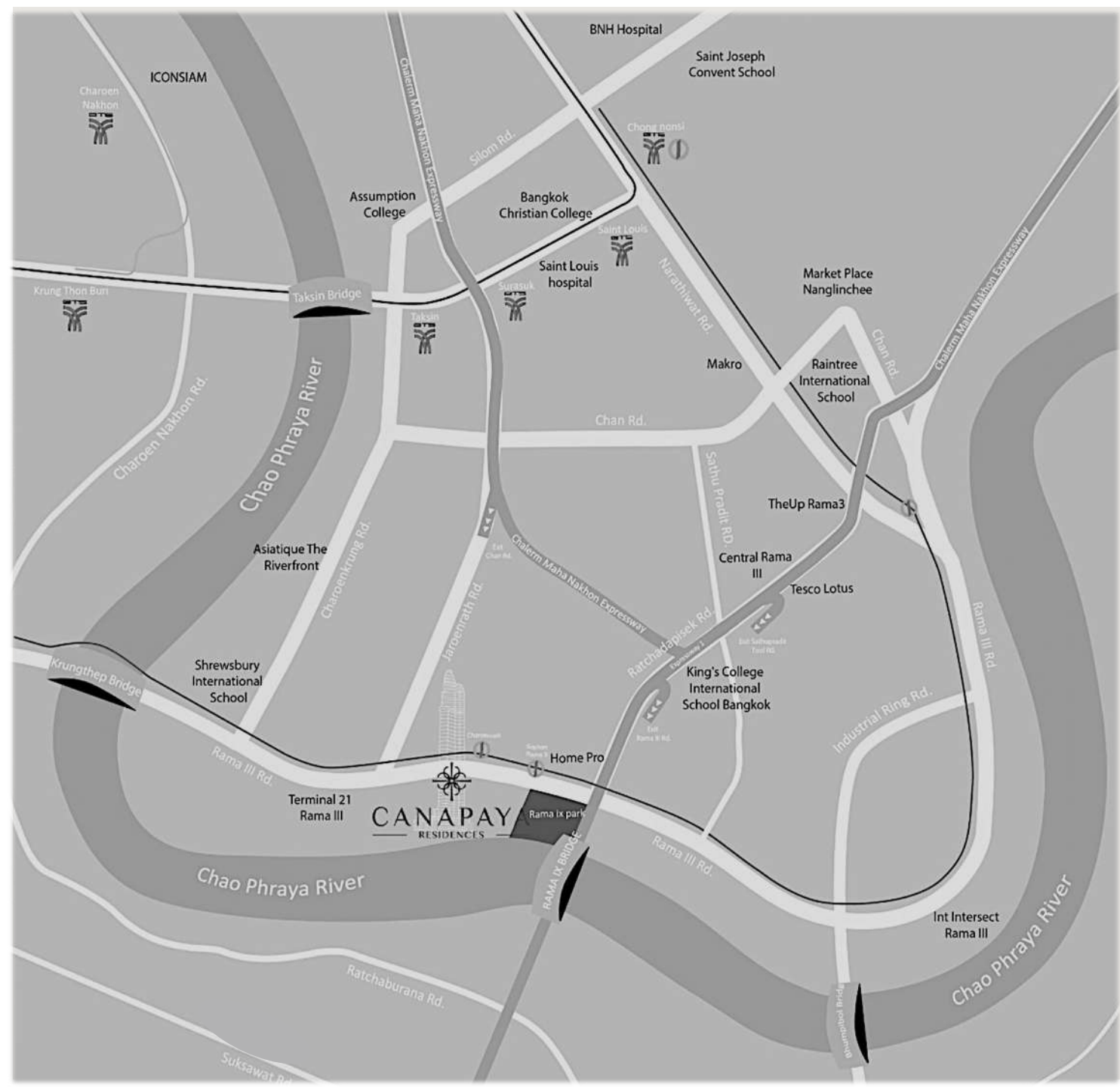
10 minutes to Asoke- Sukhumvit area

Surrounded by 3 expressway entrances and exits

Moments away from two of Thailand's top international schools

A minute away from Terminal 21 Rama III shopping center

and a walking-distance from one of Bangkok's few public parks





## OUR SURROUNDINGS

Besides the convenient location, CANAPAYA RESIDENCES is situated at the most auspicious location of all, the *belly of the dragon* of the Chao Phraya. The belly, which symbolizes security, is considered a place of great prosperity – *a place where life can grow and prosper.*

### URBAN LIFESTYLE MALL

600 m Homepro Rama III  
900 m Terminal 21 Rama III  
1.5 km King's Square  
2.3 km Asiatique the riverfront  
2.8 km Central Rama III  
3.3 km The Up Rama III  
3.4 km Makro Sathorn  
3.7 km Int' Rama III  
4.0 km Market Place Nanglinchee  
4.3 km Iconsiam  
6.8 km Siam Paragon  
11 km Central Embassy

### EDUCATION

1.5 km King's College International School  
2.4 km Shrewsbury International School  
3.8 km Bangkok Christian College  
3.9 km Raintree International School  
4.0 km Assumption College  
4.9 Km Saint Joseph Covent School

### OTHERS

600 m Montien Riverside Hotel  
720 m Rama IX Public Park  
2.7 km Four Seasons Hotel  
2.8 km Capella Bangkok  
3.3 km KingBridge Tower (Office)  
3.7 km Saint Louis Hospital  
4.0 km Mandarin Oriental  
4.3 km King Power Mahanakorn  
4.7 km BNH Hospital  
5.7 km Lumpini Park

### TRANSPORTATION

Future Monorail Grey Line  
400 m BRT Rama 9 Bridge  
3.5 km BTS Saphan Thaksin  
3.5 km BTS Surasak  
3 Expressway Entrances and Exits  
Chan Road  
Rama III  
Sathupradit

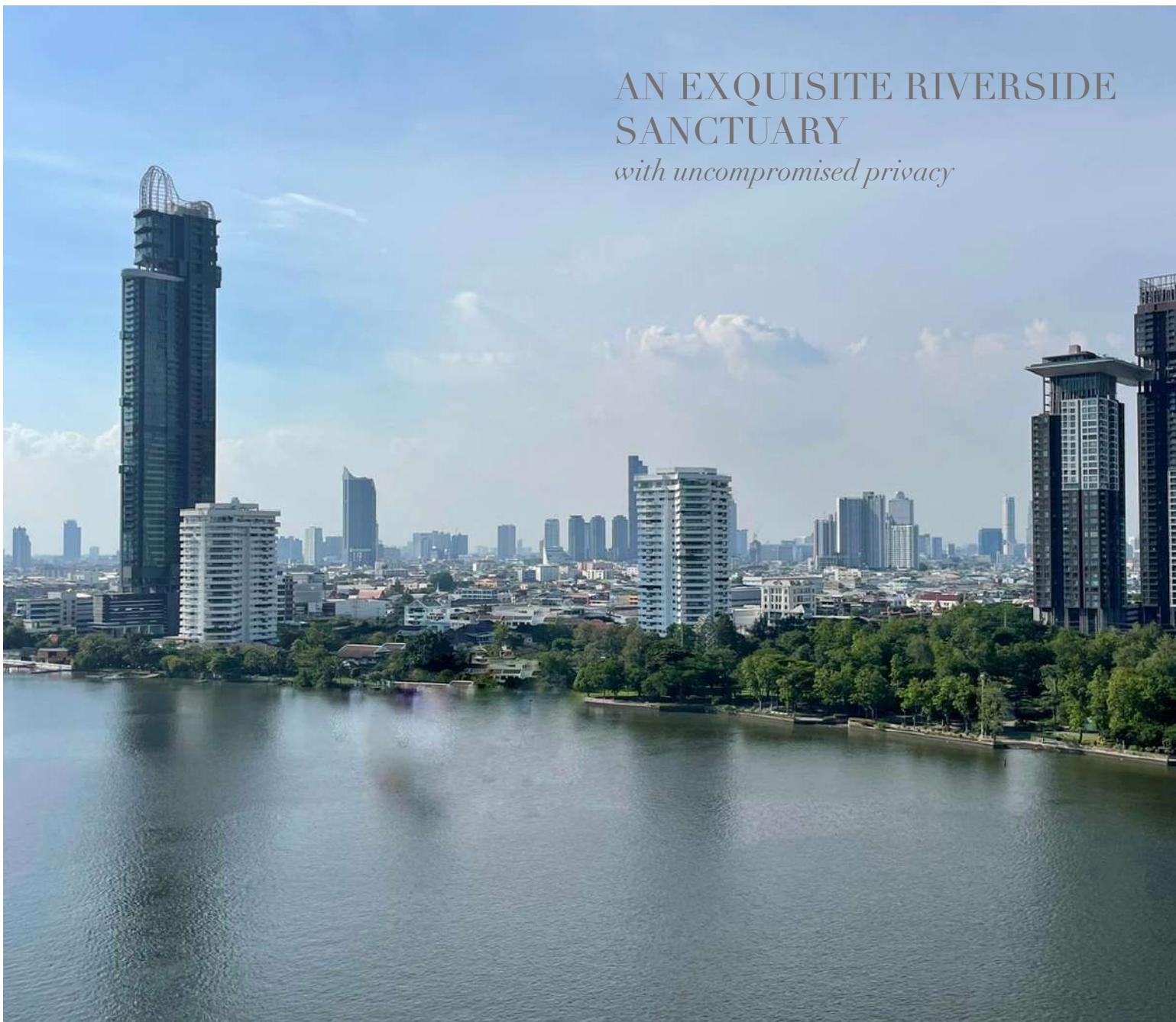




The **888** house number of CANAPAYA RESIDENCES, which the ancient Chinese believe to be the most auspicious number of all, symbolizing wealth, prosperity, and abundance, is destined to bring and attract triple infinite fortune and success to those residing at the Residences.







AN EXQUISITE RIVERSIDE  
SANCTUARY  
*with uncompromised privacy*





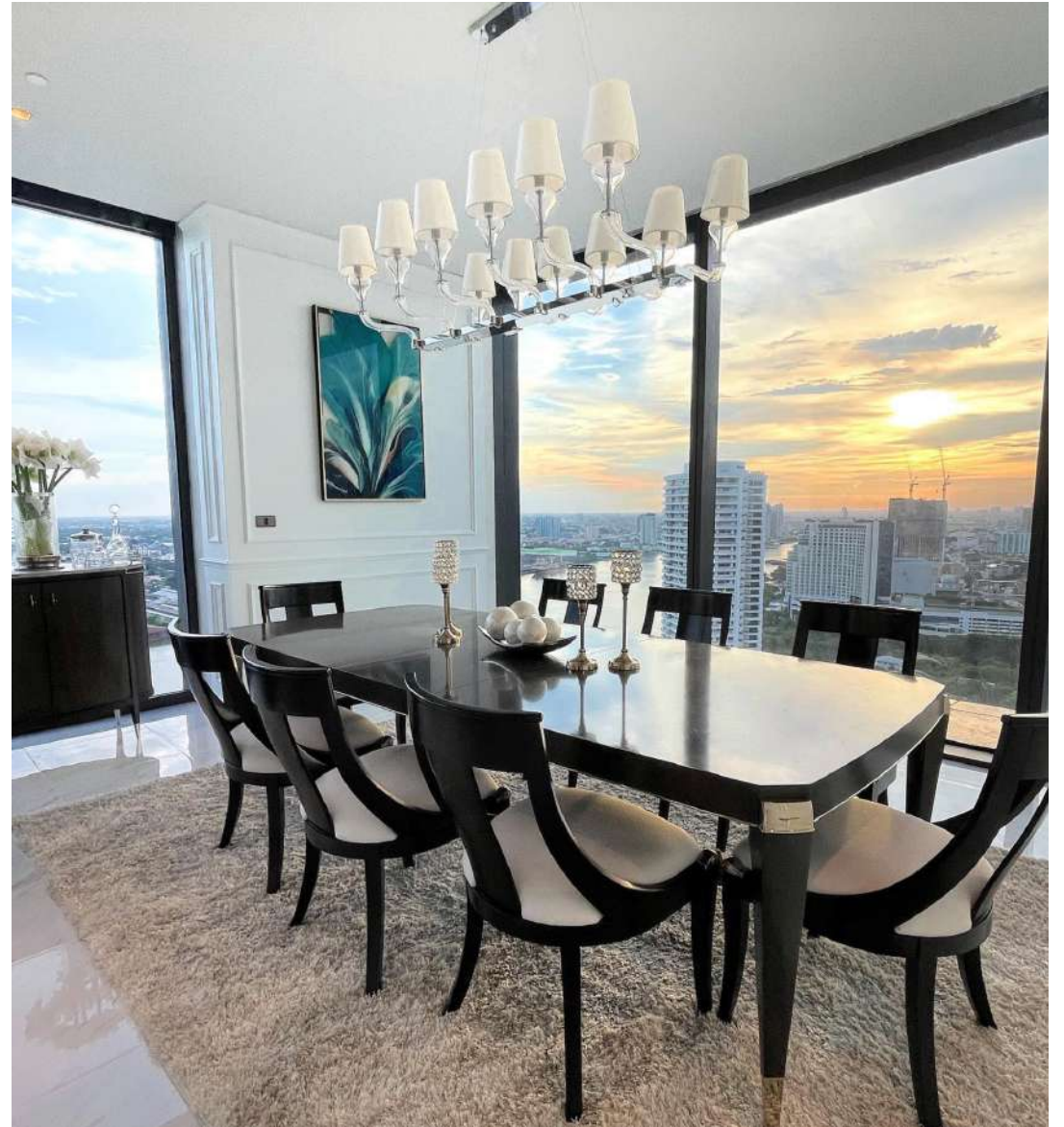
## AIRY INTERIOR SPACE DESIGNED TO MATCH THE ENDLESS RIVER VIEWS

Each residence has a floor-to-ceiling height of an impressive three meters and large panoramic windows, allowing incredible sunlight to seep through from dusk till dawn.

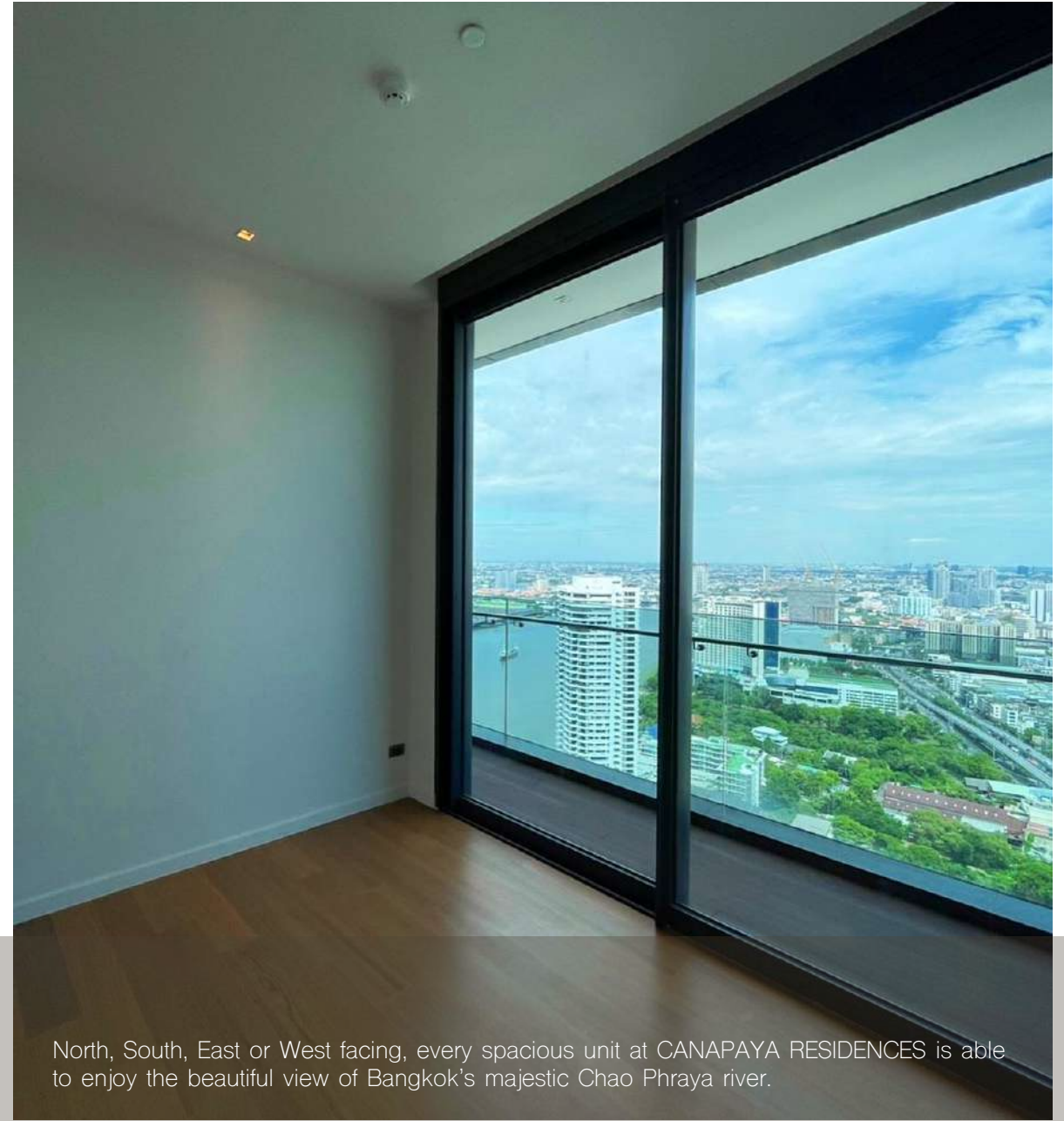
Ultimate privacy and low-density design – only 168 exclusive units, an average of 4 units per floor.











North, South, East or West facing, every spacious unit at CANAPAYA RESIDENCES is able to enjoy the beautiful view of Bangkok's majestic Chao Phraya river.





## VARIOUS AMENITIES AND FACILITIES FOR RESIDENTS TO ENJOY

Equipped with a river lounge, state-of-the-art gym and fitness facilities, steam and sauna, yoga studio, a riverside-pool and putting greens that overlook Bangkok's beautiful sunset.

Not to mention the outdoor jogging track, co-working spaces, a riverside rooftop, a half-court basketball court, children's playground, and a private pier.

Our residence is also only a walking distance away from one of Bangkok's few public parks, a perfect place for those who enjoys a morning jog surrounded by lush greenery before a start to their day.















## SECURITY

### Sophistication made simple

Gone are the days residents will be required to carry around a keycard. At CANAPAYA RESIDENCES, the advanced facial scanning technology allows residents to access their floor and parking area with ease.







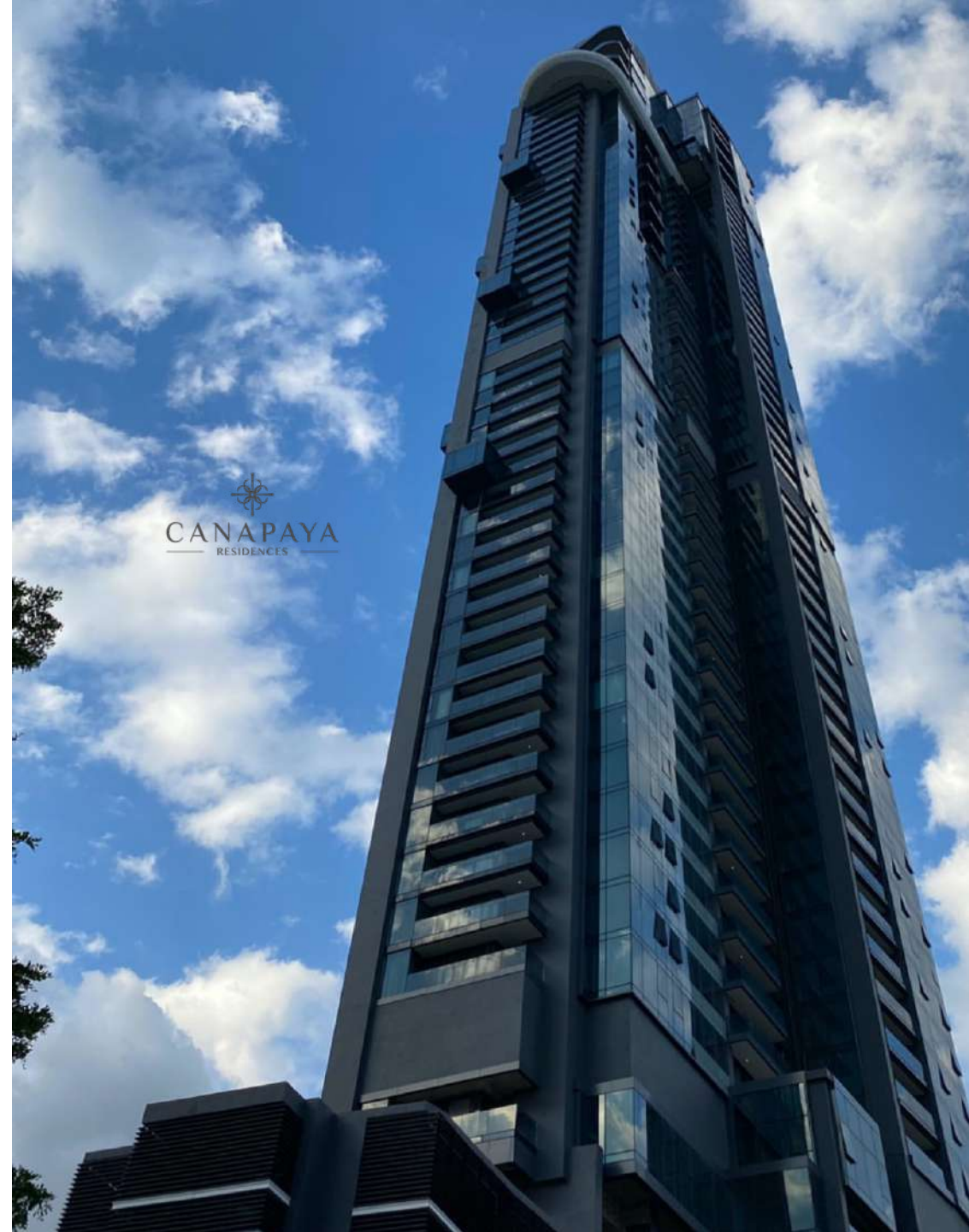






## Project Details

Type of Ownership	Freehold
Project Area	4-0-51 rai
Units	168 units
Floors	57 floors
Parking Spaces	265 cars
Year of Completion	2019 (ready to move in)
Pets Policy	Pet-friendly











Visit us at  
*Canapaya Residences*  
888 Rama III Road Bangkokleam Bangkok 10120

For more information please contact  
Email – [info@canapaya.com](mailto:info@canapaya.com)  
LINE [cnpy888](https://www.line.me/tv/cnpy888)  
Phone – 02-291-9499 . 089-483-4444  
[www.canapaya.com](http://www.canapaya.com)